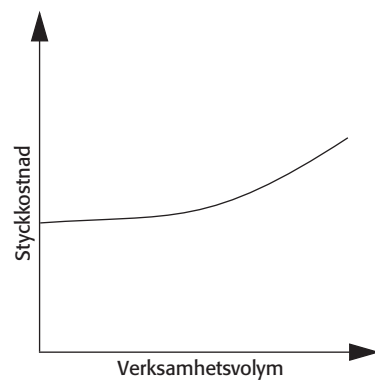
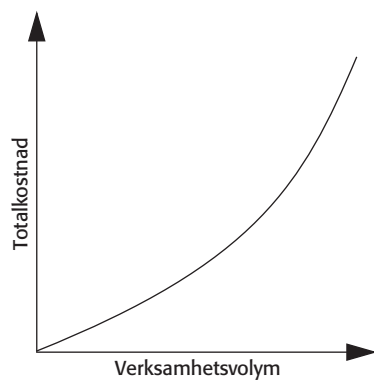
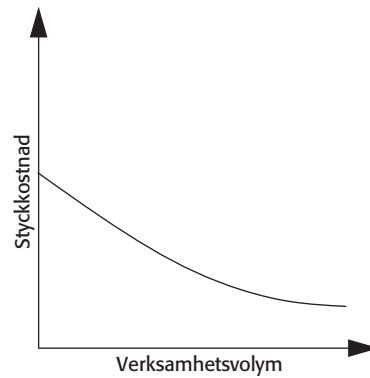
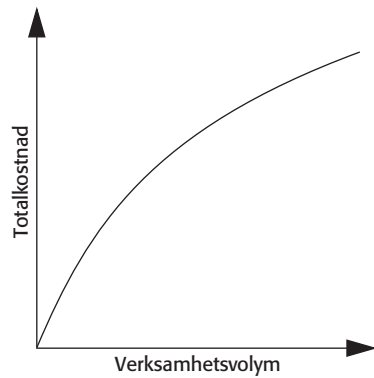


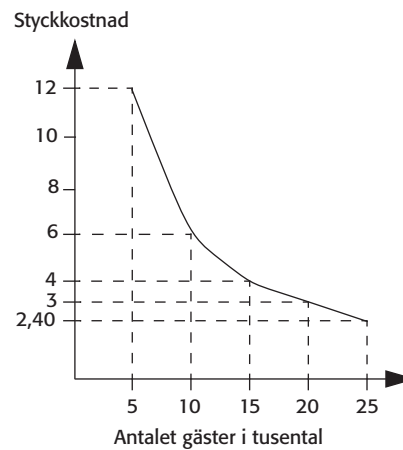
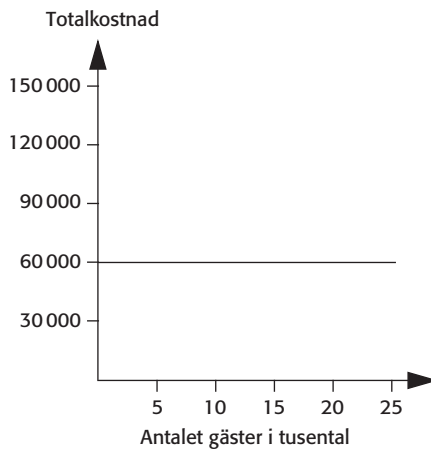
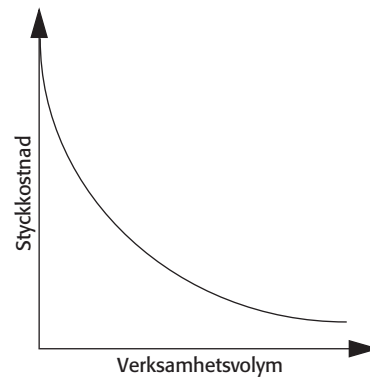
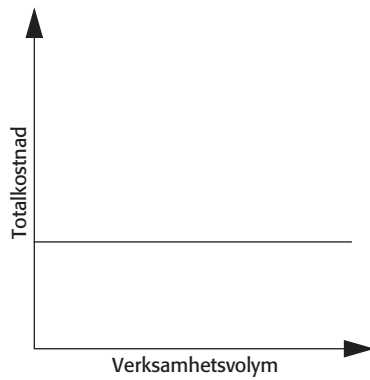
Proportionellt rörliga kostnader.



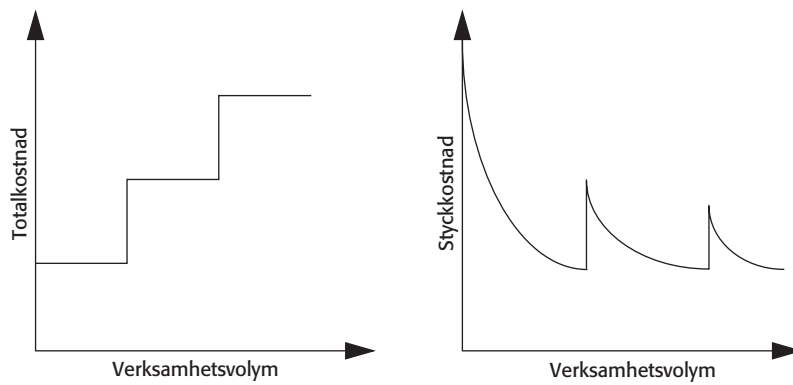
Progressivt rörliga kostnader.



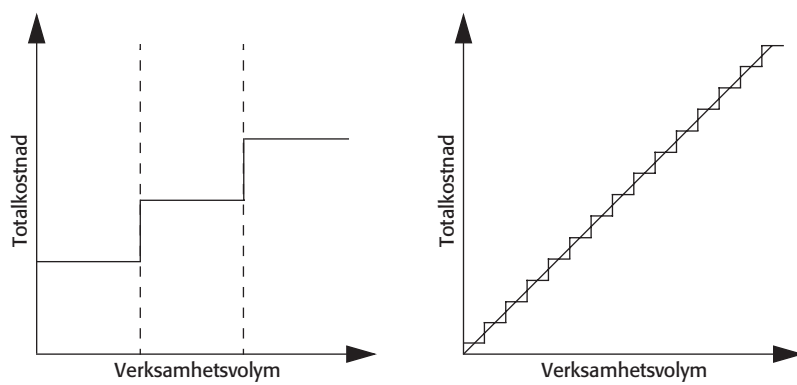
Degressivt rörliga kostnader.



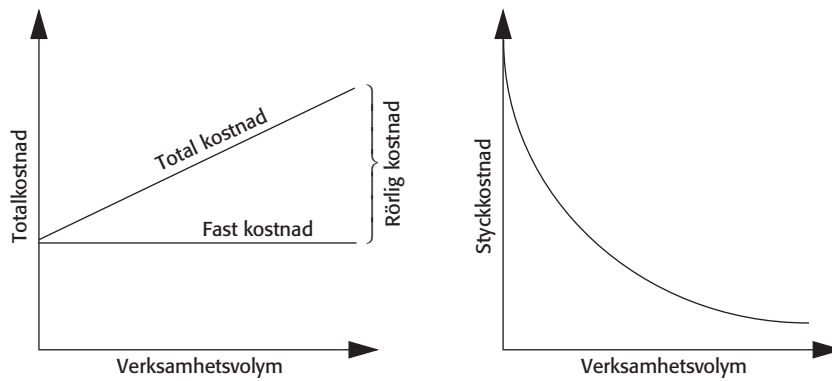
Helt fasta kostnader.



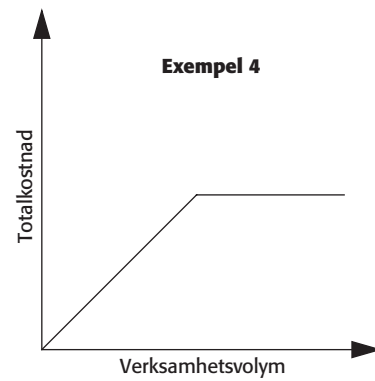
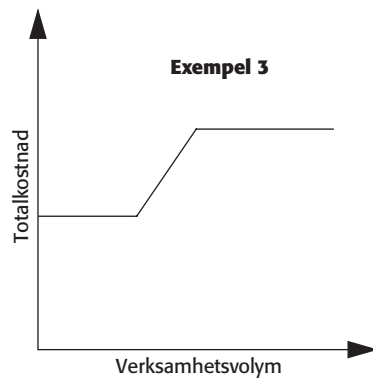
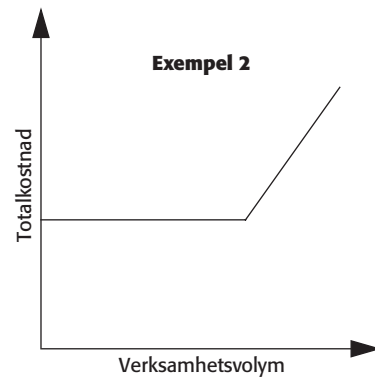
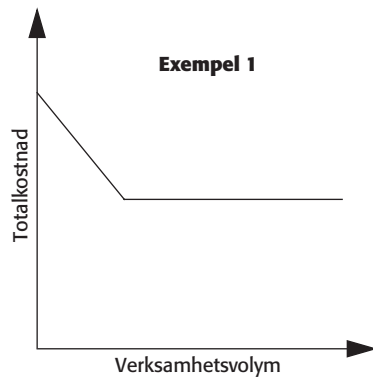
Halvfasta kostnader.



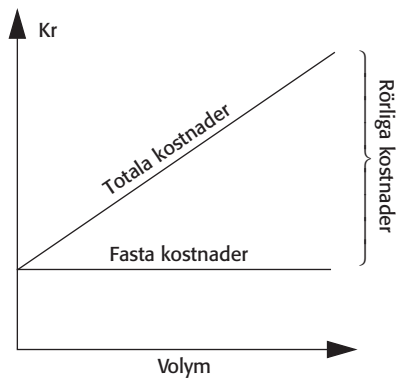
Halvfasta kostnader som helt fasta inom ett relevant område och halvfasta kostnader som proportionellt rörliga kostnader.



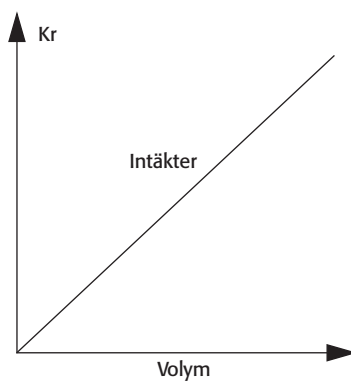
Blandade rörliga och fasta kostnader.



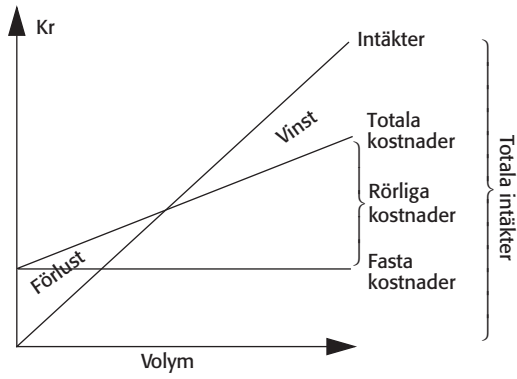
Blandade rörliga och fasta kostnader.



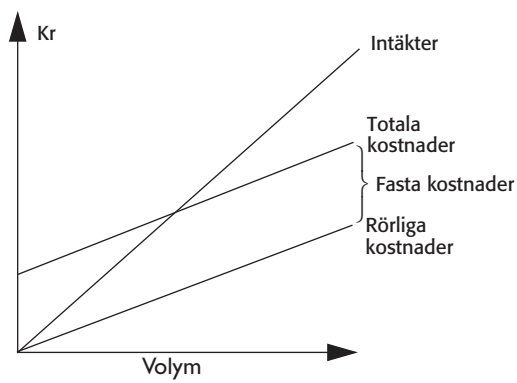
Rörliga kostnader, fasta kostnader och totala kostnader i resultatdiagram.



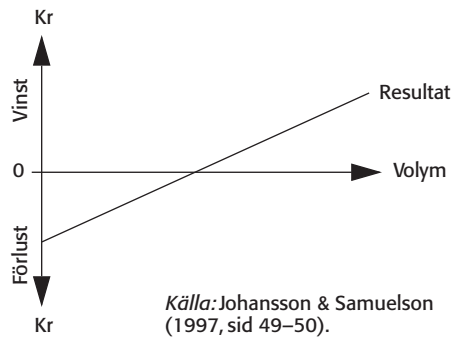
Intäkter i resultatdiagram.



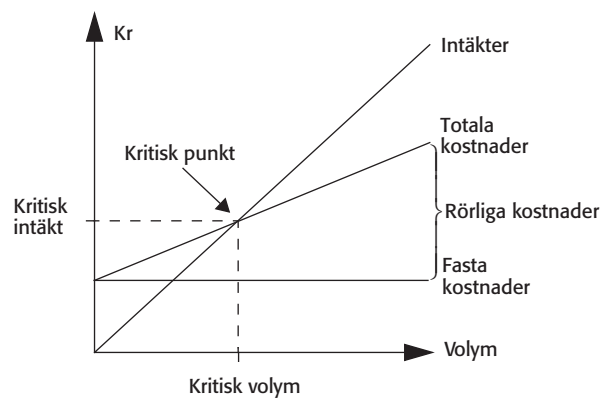
Resultatdiagram.



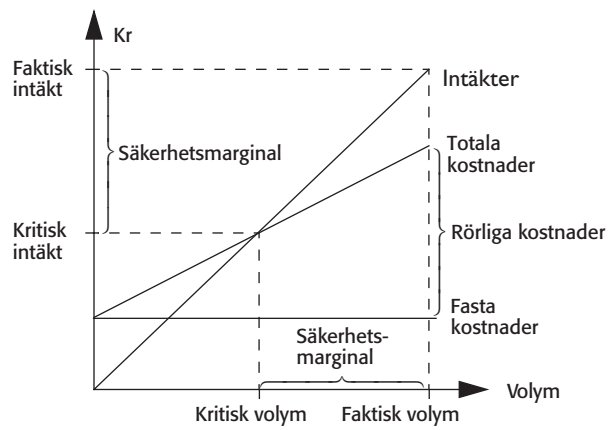
Resultatdiagram med alternativa placeringar av rörliga och fasta kostnader.



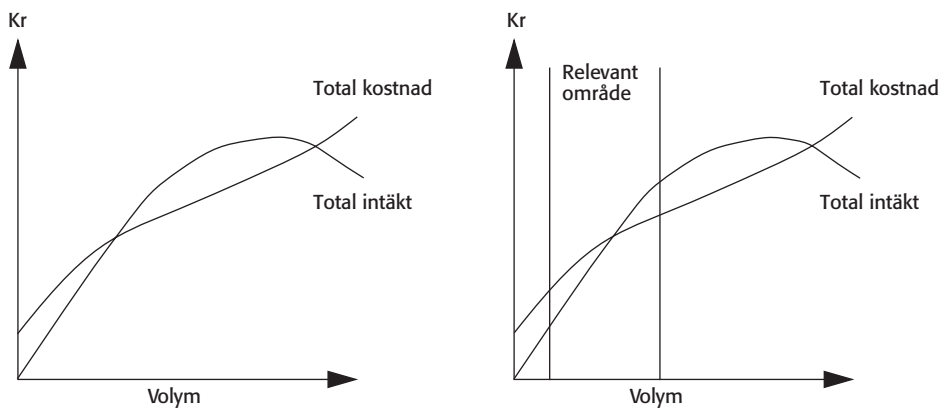
Resultatdiagram med resultatlinje.



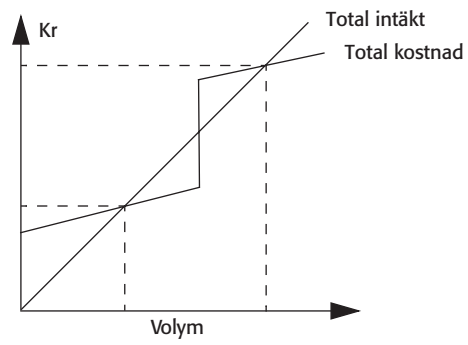
Resultatdiagram med kritisk punkt, kritisk intäkt och kritisk volym.



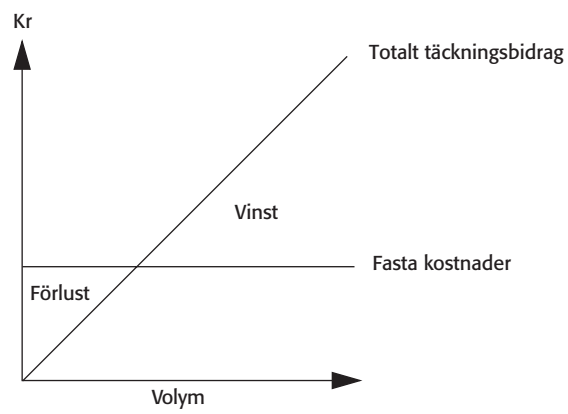
Säkerhetsmarginal i resultatdiagram.



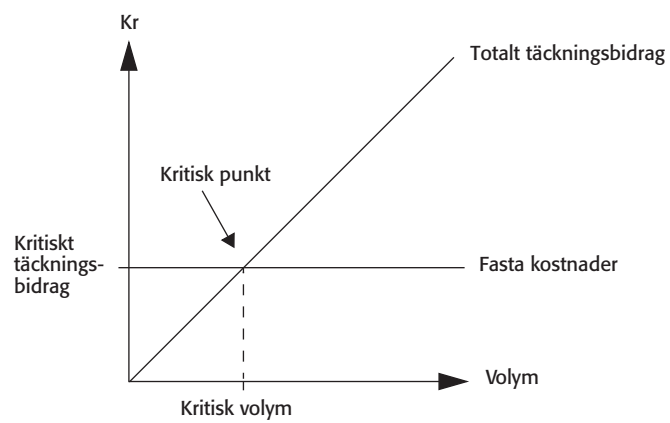
Kurvlinjära intäkt- och kostnadskurvor och ett relevant område.



Halvfasta kostnader inom ett relevant område och två kritiska punkter.



Bidragsdiagram.



**Bidragsdiagram med kritisk punkt,
kritiskt täckningsbidrag och kritisk volym.**